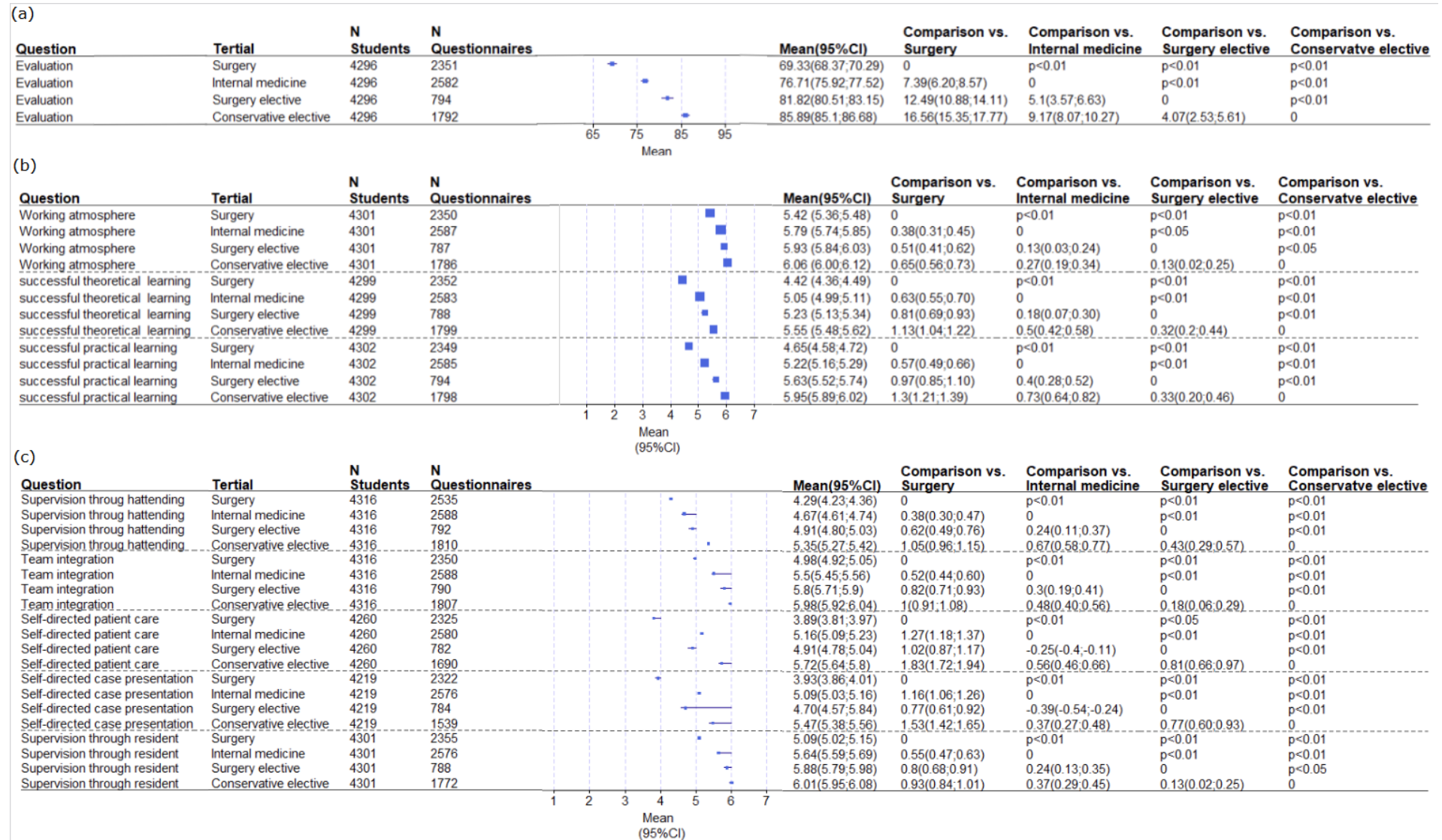


Attachment 2: Figure S4



Attachment 2 to Junga A, Görlich D, Scherzer S, Schwarz M, Schulze H, Marschall B, Becker JC. "Hold the retractor, that's it?" – A retrospective longitudinal evaluation-study of the surgery and the elective tertial in the practical year. GMS J Med Educ. 2025;42(1):Doc3. DOI: 10.3205/zma001727

Figure S4:(a) Forest plot for the factor overall assessment for the subject groups analysed. n-numbers of the sample surveyed, mean values (1-100) with 95% CI and difference with 95% CI and significance level. (b) Forest plot of the factors ward climate, theoretical and practical learning success for the subject groups analysed. (c) Forest plot on the factors for time for training, integration into the team, care of own patients, independent case presentations and care by ward physicians for the subject groups analysed. n-numbers of the sample surveyed, mean values (1-7) with 95% CI and difference with 95% CI and significance level.